

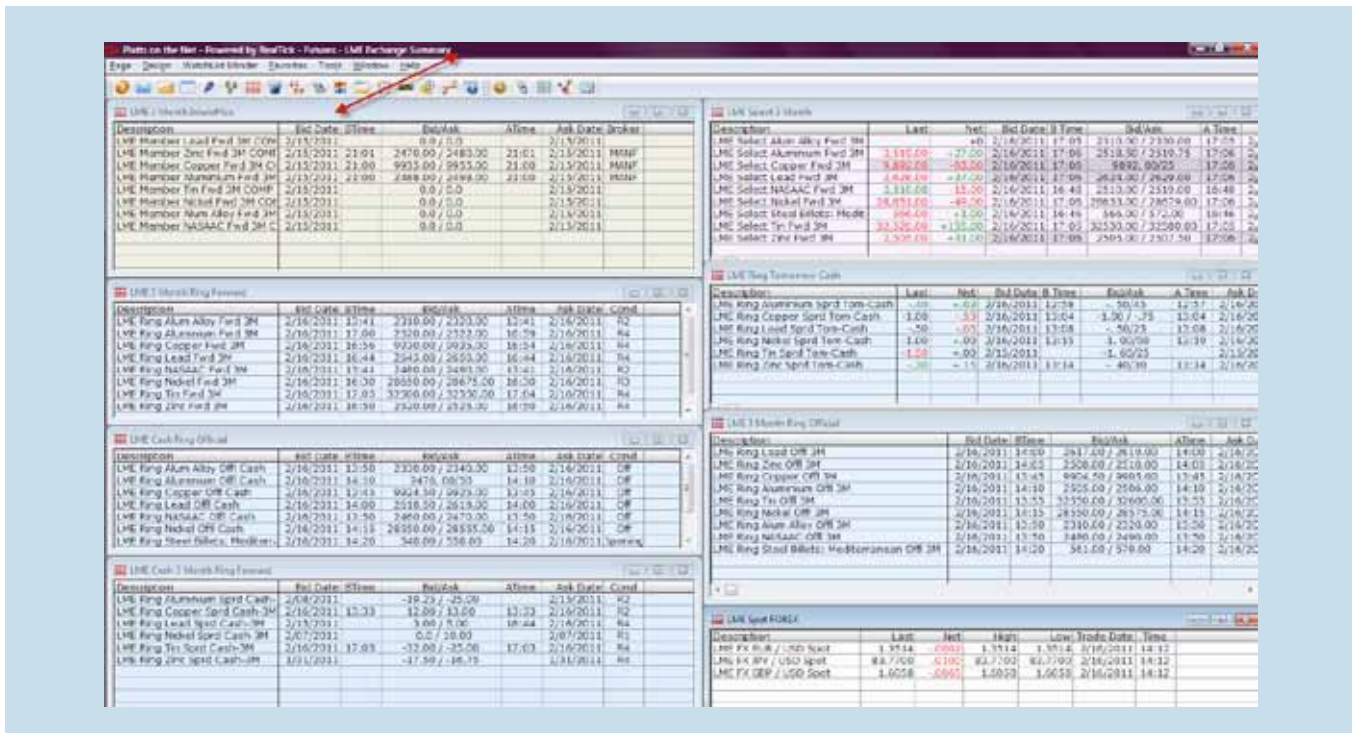


London Metal Exchange (LME)

LME Exchange Data requires a different approach for MarketMinder setup. Platts has created several module views that can be easily brought onto a desktop.

To access the predefined LME pages, select **Page, Open**.

Predefined LME Exchange Summary Page

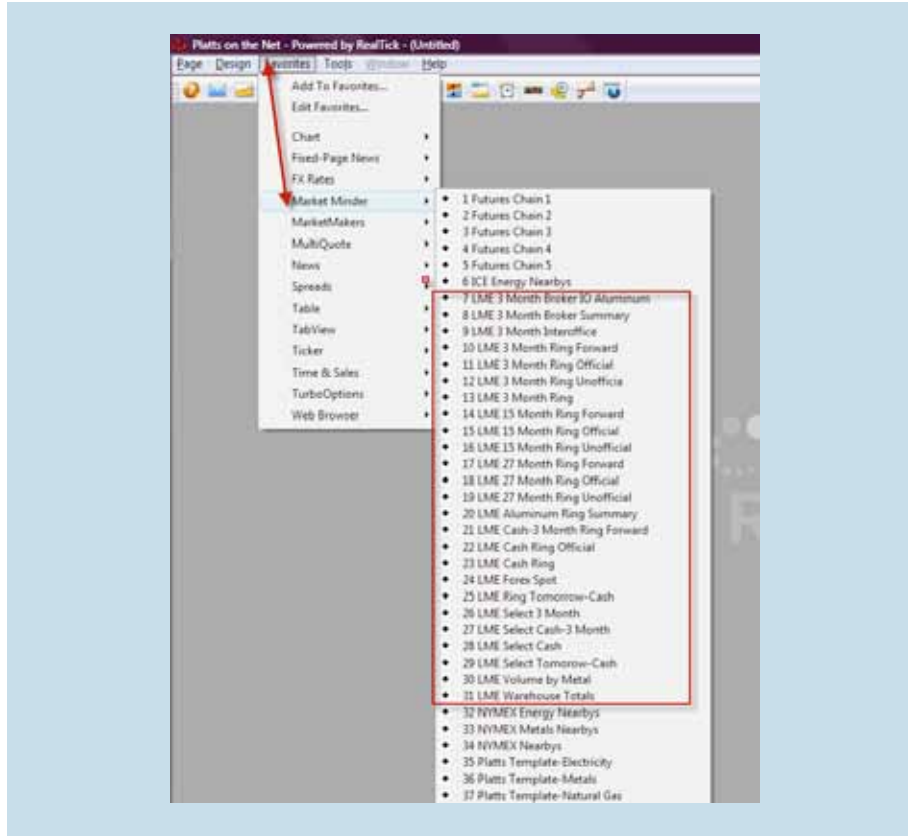


Use of Favorites to customize LME Exchange pages

The modules included in the predefined pages and others are also set up in the **FAVORITES** section to be easily copied onto your page view.

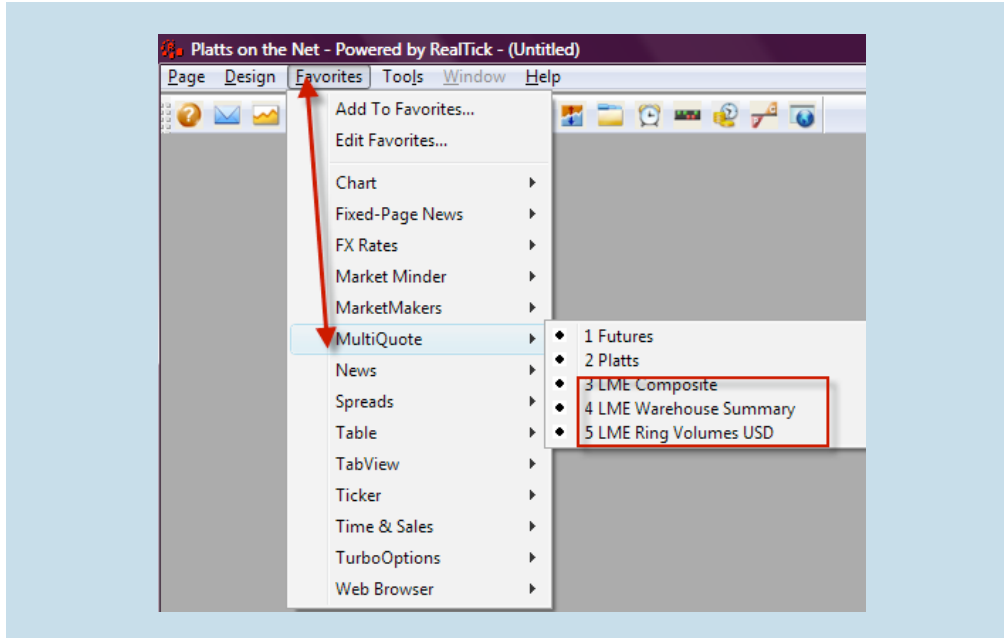
LME Exchange data modules are available under the **MarketMinder**, **MultiQuote** and **TabView** section of Favorites. Simply select and it will be placed on your desktop. Please save the page after the import if you want to attach this view to you desktop.

Favorites – MarketMinder Selections:



Description	Last Price	Bid Date	BTime	Bid/Ask	ATime	Ask Date	Trade Vol	Tot Vol	Quote Condition
LME Ring Alum Alloy Fwd 3M		2/16/2011	18:01	2310.00 / 2320.00	18:01	2/16/2011			K2
LME Ring Aluminium Fwd 3M	2504.00	2/16/2011	18:00	2504.00 / 2505.00	18:00	2/16/2011	100	1253	K2
LME Ring Copper Fwd 3M	9841.25	2/16/2011	17:55	9841.00 / 9842.00	17:55	2/16/2011	10	250	K2
LME Ring Lead Fwd 3M	2592.00	2/16/2011	17:43	2592.00 / 2593.00	17:43	2/16/2011	25	35	K2
LME Ring Nickel Fwd 3M	28550.00	2/16/2011	17:48	28575.00 / 28600.00	17:48	2/16/2011	30	60	K2
LME Ring Tin Fwd 3M	32500.00	2/16/2011	17:35	32495.00 / 32500.00	17:35	2/16/2011	1	6	K2
LME Ring Zinc Fwd 3M	2486.00	2/16/2011	17:50	2486.00 / 2487.00	17:50	2/16/2011	32	105	K2

Favorites - MultiQuote Selections:



The LME Composite Screen is a snapshot of the Market.

3 Month														
Interoffice / Broker						Ring				Cash - 3 Month				
	BTime	Bid	Ask	ATime	Broker	BTime	Bid	Ask	ATime	Cond	BTime	Bid	Ask	ATime
PB	0:00	.00	.00	0:00		10:44	2645.00	2650.00	10:44	R4	0:00	3.00	5.00	16:44
ZN	21:01	2470.00	2480.00	21:01	MANF	16:50	2520.00	2525.00	16:50	R4	0:00	-17.50	-16.75	0:00
CU	21:00	9935.00	9955.00	21:00	MANF	16:56	9930.00	9935.00	16:54	R4	13:33	12.00	13.00	13:33
AL	21:00	2488.00	2498.00	21:00	MANF	17:00	2520.00	2522.00	16:59	R4	0:00	-19.25	-25.00	0:00
SN	0:00	.00	.00	0:00		17:00	32500.00	32500.00	16:59	R2	17:03	-32.00	-30.00	17:29
NI	0:00	.00	.00	0:00		17:10	28600.00	28650.00	17:10	R4	0:00	.00	10.00	0:00
AA	0:00	.00	.00	0:00		13:41	2310.00	2320.00	13:41	R2	0:00	.00	20.00	0:00
NA	0:00	.00	.00	0:00		13:41	2480.00	2490.00	13:41	R2	0:00	-17.00	-18.00	0:00

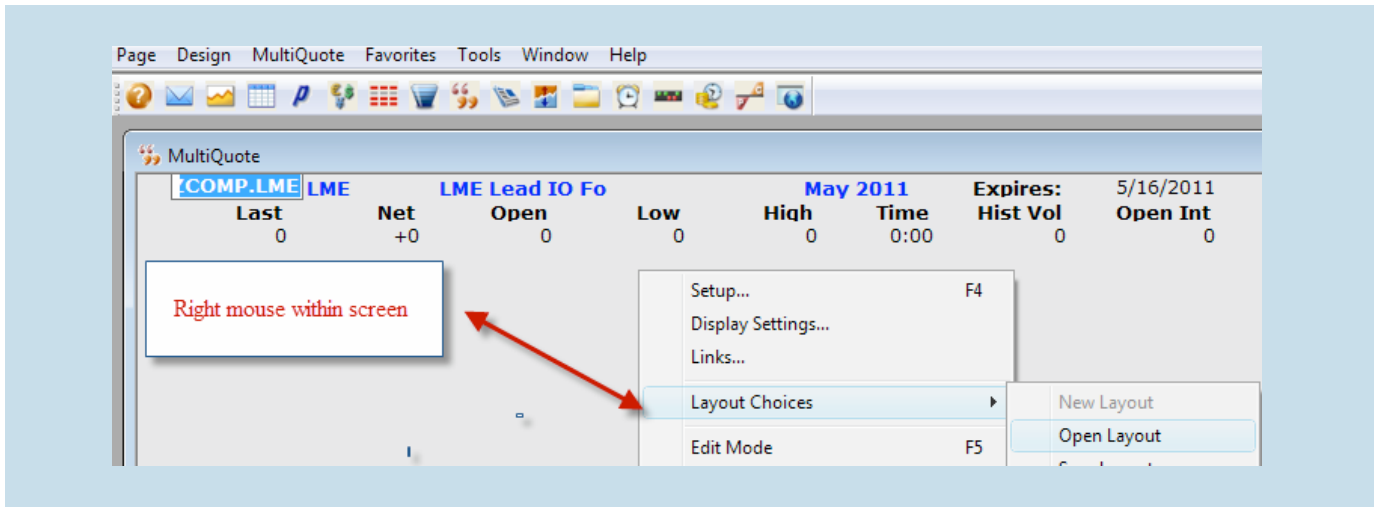
Officials				Warehouse Stocks						
	Cash	3 Month		In	Out	Total	Net	Warrants		
	Bid	Ask	Bid					Live	Cancelled	
PB	2618.50	2619.00	2617.00	2619.00	75	325	297,250	-250	275,675	21,575
ZN	2477.00	2477.50	2508.00	2510.00	25	125	708,925	-100	705,275	3,650
CU	9924.50	9925.00	9904.50	9905.00	4,125	750	405,800	+3,375	392,225	13,575
AL	2476.00	2476.50	2505.00	2506.00	3,450	6,150	4,597,925	-2,300	4,313,725	284,200
SN	32425.00	32450.00	32550.00	32600.00	150	50	17,670	+100	16,760	910
NI	28550.00	28555.00	28550.00	28575.00	204	150	130,008	-110	125,298	4,810
AA	2310.00	2340.00	2310.00	2320.00	200	60	79,540	-60	79,440	100
NA	2460.00	2470.00	2480.00	2490.00	100	100	137,080	-100	134,420	2,660

Foreign Exchange - LME					
	Last	Net	High	Low	Time
LME FX EUR / USD Spot	1.3514	-.0002	1.3514	1.3514	14:12
LME FX GBP / USD Spot	1.6058	-.0065	1.6058	1.6058	14:12
LME FX JPY / USD Spot	83.7700	-.0100	83.7700	83.7700	14:12

Note: All times are Western European Timezone W.E.T. Source: London Metal Exchange

In the event that the screen does not populate when retrieved, do the following:

Place cursor on top of screen, right mouse and select LME Composite.mqt. The screen will fill in. Please save to the desktop.



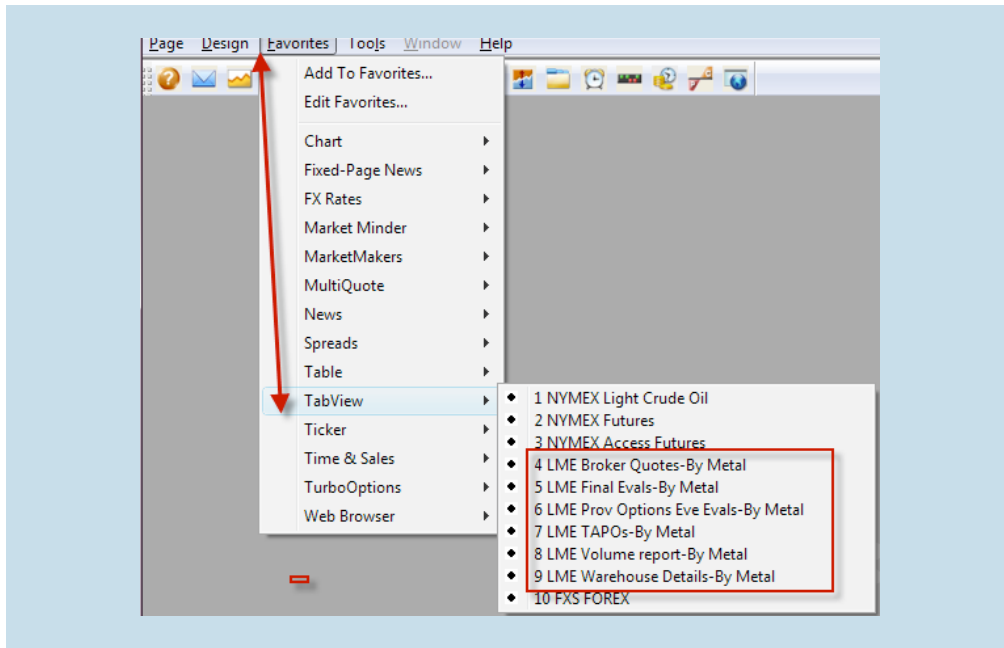
Select Favorite > MultiQuote for a snapshot of Warehouse Stocks.

	<u>In</u>	<u>Out</u>	<u>Total</u>	<u>Net</u>	<u>Warrants</u>	
					<u>Live</u>	<u>Cancelled</u>
PB	75	325	297,250	-250	275,675	21,575
ZN	25	125	708,925	-100	705,275	3,650
CU	4,125	750	405,800	+3,375	392,225	13,575
AL	3,850	6,150	4,597,925	-2,300	4,313,725	284,200
SN	150	50	17,670	+100	16,760	910
NI	204	150	130,098	-150	125,268	4,830
AA	200	60	79,540	-60	79,440	100



A more detailed view is available under the TabView section (below)

Favorites - TabView:



TabView pages are set up with tabs at the top indicating the different metals. Click on the tab to bring forward specific information.

TabView : LME BROKER QUOTES | ZN

AL CU NA AA NI SN ZN PB +

Description	BTime	Bid Date	Bid/Ask	ATime	Ask Date
LME Member Zinc Fwd 3M COMP	21:01	2/15/2011	2470.00 / 2480.00	21:01	2/15/2011
LME Member Zinc Fwd 3M MANF	21:01	2/15/2011	2470.00 / 2480.00	21:01	2/15/2011
LME Member Zinc Fwd 3M SEMP		2/15/2011	0.0 / 0.0		2/15/2011

Example of TabView Warehouse Details Report:

The screenshot shows a software application window titled "Detailed Warehouse Information by Metal". The window contains a table with the following columns: Description, Close, Open, In, Out, Moves, Warrant, Cancelled, and Trade Date. The table lists various warehouse stock movements for LME NASAAC metals, including Ingots, Lg Sow, Sm Sow, and T-Bar, across different warehouses (BALT, CHIC, DETR, LOUV, OWEN, STLO). The data is organized into a grid with alternating row colors for readability.

Description	Close	Open	In	Out	Moves	Warrant	Cancelled	Trade Date
LME NASAAC Ingots Warehouse Stock Movements	26,600	26,620	100	20	-20	25,640	960	2/16/2011
LME NASAAC Ingots BALT Warehouse Stock Movements	8,880	8,900	100	20	-20	8,480	400	2/16/2011
LME NASAAC Ingots CHIC Warehouse Stock Movements	5,220	5,220	120	20	+0	4,780	440	2/16/2011
LME NASAAC Ingots DETR Warehouse Stock Movements	11,000	11,000	740	40	+0	10,880	120	2/16/2011
LME NASAAC Ingots LOUV Warehouse Stock Movements	0	40	120	40	+0	0	0	
LME NASAAC Ingots OWEN Warehouse Stock Movements	0	20	1,400	20	+0	0	0	
LME NASAAC Ingots STLO Warehouse Stock Movements	0	20	60	20	+0	0	0	
LME NASAAC Lg Sow Warehouse Stock Movements	3,480	3,480	260	20	+0	3,480	0	2/16/2011
LME NASAAC Lg Sow BALT Warehouse Stock Movements	3,320	3,320	260	20	+0	3,320	0	2/16/2011
LME NASAAC Lg Sow CHIC Warehouse Stock Movements	160	160	0	0	+0	160	0	2/16/2011
LME NASAAC Lg Sow DETR Warehouse Stock Movements	0	0	0	0	+0	0	0	
LME NASAAC Lg Sow LOUV Warehouse Stock Movements	0	0	0	0	+0	0	0	
LME NASAAC Lg Sow OWEN Warehouse Stock Movements	0	40	120	40	+0	0	0	
LME NASAAC Lg Sow STLO Warehouse Stock Movements	0	0	0	0	+0	0	0	
LME NASAAC Sm Sow Warehouse Stock Movements	99,240	99,320	1,000	80	-80	97,640	1,600	2/16/2011
LME NASAAC Sm Sow BALT Warehouse Stock Movements	0	0	0	0	+0	0	0	
LME NASAAC Sm Sow CHIC Warehouse Stock Movements	64,800	64,840	1,000	40	-40	63,960	840	2/16/2011
LME NASAAC Sm Sow DETR Warehouse Stock Movements	22,000	22,040	2,740	40	-40	21,240	760	2/16/2011
LME NASAAC Sm Sow LOUV Warehouse Stock Movements	1,380	1,380	0	0	+0	1,380	0	2/16/2011
LME NASAAC Sm Sow OWEN Warehouse Stock Movements	0	20	100	20	+0	0	0	
LME NASAAC Sm Sow STLO Warehouse Stock Movements	6,860	6,860	60	20	+0	6,860	0	2/16/2011
LME NASAAC T-Bar Warehouse Stock Movements	7,760	7,760	540	20	+0	7,660	100	2/16/2011
LME NASAAC T-Bar BALT Warehouse Stock Movements	3,360	3,360	620	20	+0	3,360	0	2/16/2011
LME NASAAC T-Bar CHIC Warehouse Stock Movements	0	0	0	0	+0	0	0	
LME NASAAC T-Bar DETR Warehouse Stock Movements	4,400	4,400	540	20	+0	4,300	100	2/16/2011
LME NASAAC T-Bar LOUV Warehouse Stock Movements	0	0	0	0	+0	0	0	
LME NASAAC T-Bar OWEN Warehouse Stock Movements	0	140	60	140	+0	0	0	
LME NASAAC T-Bar STLO Warehouse Stock Movements	0	0	0	0	+0	0	0	
LME NASAAC Tot Warehouse Stock Movements	137,080	137,180	100	100	-100	134,420	2,660	2/16/2011
LME NASAAC Tot BALT Warehouse Stock Movements	15,560	15,580	100	20	-20	15,160	400	2/16/2011
LME NASAAC Tot CHIC Warehouse Stock Movements	70,180	70,220	1,000	40	-40	68,900	1,280	2/16/2011
LME NASAAC Tot DETR Warehouse Stock Movements	37,400	37,440	3,280	40	-40	36,420	980	2/16/2011
LME NASAAC Tot LOUV Warehouse Stock Movements	1,380	1,380	120	40	+0	1,380	0	2/16/2011
LME NASAAC Tot OWEN Warehouse Stock Movements	0	40	220	40	+0	0	0	
LME NASAAC Tot STLO Warehouse Stock Movements	6,860	6,860	60	20	+0	6,860	0	2/16/2011

Customized desktops can be set up using a combination of retrieval methods, including setting up the Metal Alert News service, as outlined in the Alert Service instructions. As with most Windows applications, **save the desktop** before making changes so the changes can be dismissed if you do not like the results.

